



CORPORATE PROFILE

Outline

- Corporate Name **UNICOOPJAPAN**
- Head Office **1-12, Uchikanda 1-chome, Chiyoda-ku,
Tokyo, 101-8505, JAPAN**
Phone : 03-3296-8960
FAX : 03-3219-1465
- URL **<http://www.unicoop.co.jp/>**
- Establishment **April 15, 1961**
- Paid-in Capital **Yen 1,005.1 million**
- Number of Employees **97 (April 2008)**
- Major Stockholders **Zen-Noh**
The Norinchukin Bank
Zenkyoren
Zengyoren
Zenkoku-koseiren
Zenmoriren

UNICOOPJAPAN was formed in 1961 by Japan's Agricultural, forestry and fishery cooperatives for exporting their products and importing their necessary raw materials and production resources.

Since the inauguration, the company has carried on trade with other cooperatives of the world on the basis of relationships of mutual benefit and trust. Needless to say, it conducts an active trade with governmental agencies as well as private corporations that show understanding to the principles and ideals of cooperatives.

The political and economic conditions of the world, including those of food, energy and other resources, become increasingly more complex, and countries become more interdependent, indicating the need for closer cooperative relationship among nations. Under these circumstances, UNICOOPJAPAN is making unceasing efforts to meet the expectations of our member cooperatives while being fully aware of the importance of the mission and role we have been assigned to.



CORPORATE PROFILE

Board of Directors and Auditors

■ President

Yoshio Iso

■ Managing Directors

Hideo Takamatsu

Shingo Nakatsuka

■ Directors

Masashi Kitamura

(General Manager Feed and Grain Dept.)

Hiroaki Inuzuka

(General Manager Administration Dept.)

Ryuichi Aranami

(Deputy General Manager of Zen-Noh)

Hiroshi Tsuchiya

(Managing Director of Zenchu)

■ Auditors

Toshiro Yoshioka

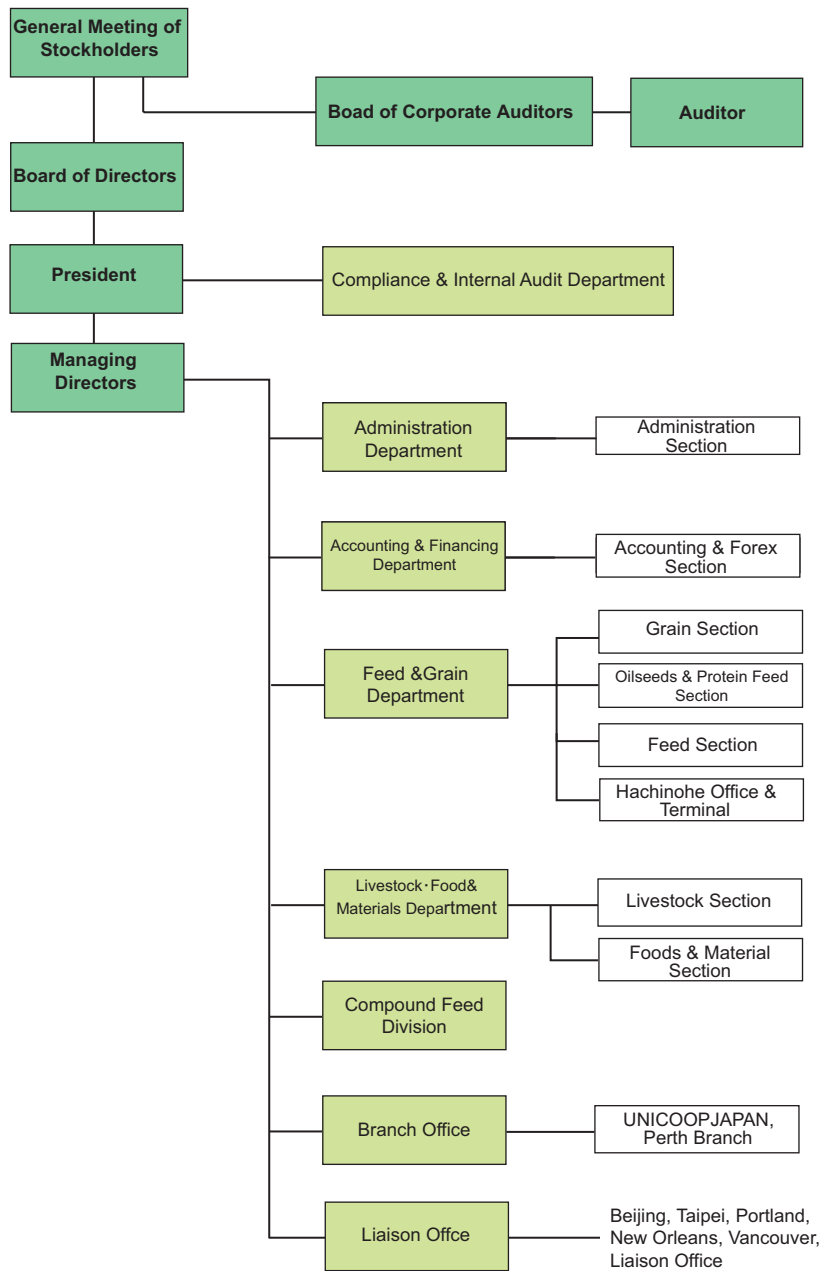
Ikuhiro Kawasumi

Hiroshi Nishimura



CORPORATE PROFILE

Organization



Affiliated Corporation

ZEN-NOH UNICO AMERICA CORPORATION
 ZEN-NOH GRAIN CORPORATION



ACTIVITIES

Major Trading Items

■ Import

Corn, Grain Sorghum, Soybeans, Soybean Meal, Wheat, Barley, Rice, Oats, Rye, Skim Milk Powder, Wheat Bran, Beet Pulp Pellets, Alfalfa Pellets, Hay Cubes, Molasses, Baled Hay, Lupins, Canola, Canola Meal, Cotton Seed, Corn Gluten Meal, Corn Gluten Feed, Soyhull Pellet, Whey Powder, DDGS, Feed Additives, Animal Pharmaceuticals

■ Export

Feed Additives

Grains and Feedstuffs

Japan's annual production of compound feeds reaches about 24 million tons. 62 percents of the raw materials are imported feed grains like corn and grain sorghum. When soybean meal, wheat bran and other secondary products are included, Japan virtually depends on overseas supply for approximately 76 percent of its demand.



Therefore, it is essential for our affiliated livestock feed industries to secure a stable supply of the raw materials.

UNICOOPJAPAN, in close collaboration with Zen-Noh, imports a significant amount of the raw materials mainly from cooperatives in the United States, Canada, Australia, Latin America, Thailand, China, Europe and so forth.

As a special feature of UNICOOPJAPAN's business activities, it has been importing a substantial quantity of corn, grain sorghum and soybeans from Zen-Noh Grain Corporation since 1982, when it commenced full-scale operation on the banks of the Mississippi River in the State of Louisiana, U.S.A.

UNICOOPJAPAN contributes to a stable supply of wheat, barley and rice of Japanese government through tender system of General Food Policy Bureau, Ministry of Agriculture, Forestry and Fisheries of Japan.

Feed Additives and Animal Pharmaceuticals

UNICOOPJAPAN expedites to develop and import feed additives with which high feed efficiency can be expected through biochemical methods.

In relation to animal pharmaceuticals, UNICOOPJAPAN cooperates with Zen-Noh in the development and merchandizing of new products.



ACTIVITIES

Major Trading Items

■ Import

Dairy cattle for breeding, Feeding steer, Bovine frozen embryo, Bovine frozen semen, Sex determination agent, Breeding pig, Racehorse, Riding horse, SPF poultry egg, Other domestic animals in general, Livestock-related apparatus and materials

■ Export

Racehorse, Riding horse, Bovine frozen semen, Other superior domestic animals and related goods.

Livestock

■ Livestock, gene and related Material

We are helping to promote dairy and livestock industry in Japan, through the activity of importation of needed domestic animals such as dairy cow and feeding steer of superior quality, and their related gene (in the form of semen and embryo). (Photo: Livestock carrier "MALIKSI")

In addition, we are handling import of livestock-related material such as the apparatus for artificial insemination, as well as export of domestic animals and related goods.





ACTIVITIES

Major Trading Items

■ Import

Farmer's split-toe work shoes,
Raincoats

Materials

UNICOOPJAPAN is supplying materials for agricultural production and daily necessities for farming households aiming at contributing for modernization of Japanese agricultural production and farmer's life-style.

Our main items are work-shoes, farmer's raincoats, imported from China in cooperation with Zen-Noh and its associated home-manufacturers under joint-venture business or on consignment basis with Chinese corporations.



ACTIVITIES

Major Trading Items

■ Import

Honey, Fruits Juices, Salted red pepper,
Canned Products, Vegetable Seeds

■ Export

Rice, Fresh Fruits and Vegetables, Agricultural Products ,
Processed Agricultural Products

Food

Import of food stuff consists primarily of raw materials and semi-processed products, required by our related food industries.

On the other hand, UNICOOP JAPAN exports Japanese rice, fresh fruits, vegetables and the other Agricultural Products and Processed Agricultural Products.





UNICOOPJAPAN



NETWORK

Domestic Offices

HACHINOHE OFFICE & TERMINAL

24-21, Aza-Kaigan, Oaza-Kawaragi,
Hachinohe-City, Aomori 039-1161, Japan

Phone 0178-28-6732

Fax 0178-28-9819

Branch Offices

UNICOOPJAPAN, Perth Branch

Level 4/40 St. Georges Terrace, Perth WA 6000, AUSTRALIA

Phone 61-8-9221 3544

Fax 61-8-9221 3368

Liaison Offices

UNICOOPJAPAN BEIJING LIAISON OFFICE

Room 718, Fazhang Bldg., 5 Dong Sanhuan Bei-lu, Chaoyang District,
Beijing, P.R.CHINA

Phone 10-6590-8531

Fax 10-6590-8534

UNICOOPJAPAN TAIPEI LIAISON OFFICE

8F-1, Tsu Shen Bldg., No.120, Sec.1, Nanking E.Rord, Taipei,
TAIWAN

Phone 2-2100-1626/1659

Fax 2-2100-1711





UNICOOP JAPAN



NETWORK

UNICOOPJAPAN PORTLAND REPRESENTATIVE OFFICE

One SW Columbia Street, Suite 1860, Portland OR 97258 U.S.A.

Phone 971-244-0533

Fax 971-244-0538

UNICOOPJAPAN VANCOUVER REPRESENTATIVE OFFICE

Suite 590-789, West Pender Street,
Vancouver, B.C., CANADA V6C 1H2

Phone 604-602-9050

Fax 604-602-9055

UNICOOPJAPAN NEW ORLEANS REPRESENTATIVE OFFICE

1127 SERVICE ROAD EAST HIGHWAY 190,
COVINGTON, LA 70433 U.S.A.

Phone 985-871-4420

Fax 985-871-4420





UNICOOP JAPAN



NETWORK

Affiliated Corporations

ZEN-NOH UNICO AMERICA CORPORATION

1127 Service Road East U.S. Highway 190, Covington, LA 70433,
U.S.A.

Phone 985-871-4419,4420

Fax 985-867-3575

ZEN-NOH UNICO AMERICA CORPORATION NEW YORK BRANCH

Westchester Financial Center 4th Floor 50 Main Street White Plains,
NY 10606, U.S.A.

Phone 914-428-4113

Fax 914-428-4024

ZEN-NOH GRAIN CORPORATION

1127 Service Rd. East., U.S.Highway 190, Covington, LA 70433,
U.S.A.

Phone 985-867-3500

Fax 985-867-3506

ZEN-NOH GRAIN CORPORATION PORTLAND DIVISION

One SW Columbia Street, Suite, #1860, Portland, OR 97258 U.S.A.

Phone 971-244-0533

Fax 971-244-0538